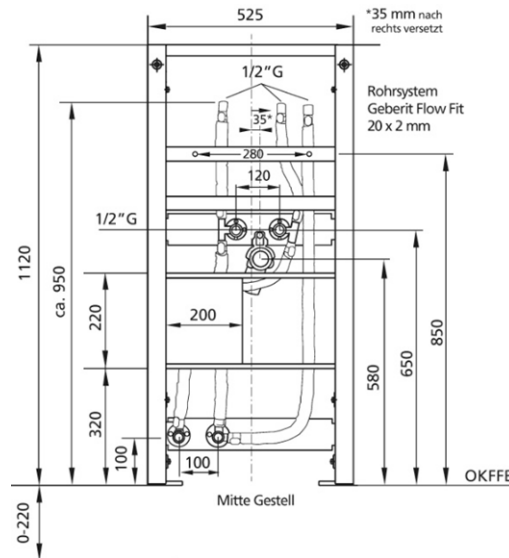
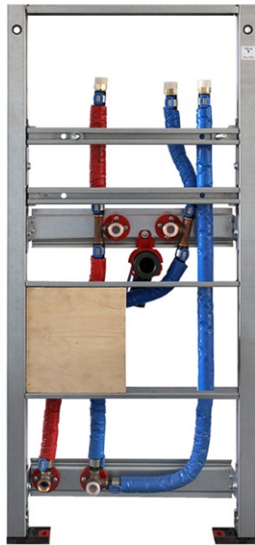


**BS+ DLE-Fix Basic** washbasin module for instantaneous water heaters, including internal piping for stand fittings and wall bracket for pre-wall installation

**Sound-insulated with premium wall brackets for pre-wall mounting**



#### Intended use

- For drywall construction
- For installation in partial or room-height pre-wall installations
- For installation in room-height installation walls
- For mounting washbasins
- For stand fittings
- For mounting instantaneous water heaters
- For floor structures 0-22 cm

#### Features

- Self-supporting Sendzimir galvanised and sound-insulated steel frame 48 mm
- Galvanised footrests, adjustable 0-22 cm
- Rotatable plastic feet, depth suitable for installation in UW 50 and UW 75 U-profiles
- Fixing distance to washbasin up to 37.5 cm
- Connection elbow can be mounted in various depth positions without tools
- Connection elbow mounting soundproofed

#### Scope of delivery

- Internal pre-assembled and insulated drinking water piping made of multi-layer composite pipe
- Inlet: TW and TWW 3/4 AG, outlet: TW and TWW 3/4 IG
- With 2 wall plates 1/2 IG TW and TWW for mounting angle valves
- With 2 wall plates 1/2 IG TW and TWW for mounting instantaneous water heaters
- With laminated wood mounting plate for attaching instantaneous water heaters
- 2 insulating sleeves
- 2 M10 threaded rods
- PE-HD connection elbow, DN 50 mm
- DN 32 mm seal
- Wall bracket for pre-wall installation
- Fastening materials

Make: Burda

Type: BS+

Item no.: 212037.00