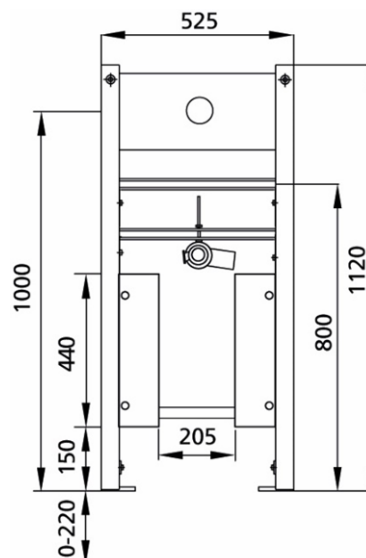
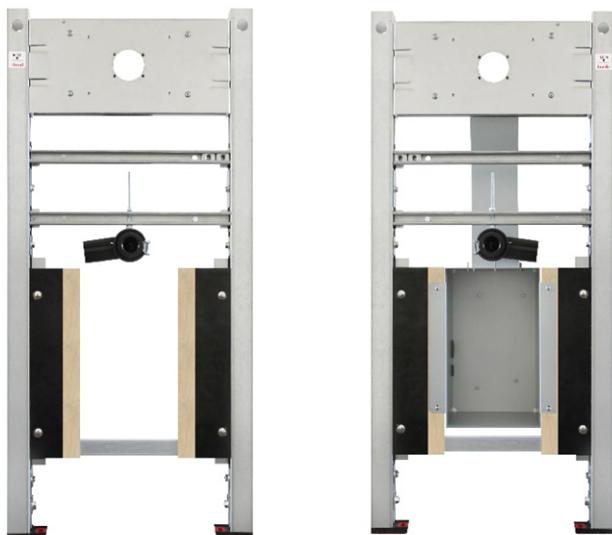


BS+ Element for washbasin, 112 cm for Dyson Airblade
wash + dry WD06 Wall fitting WT mounting with threaded rod

Sound-insulated with optional premium wall brackets for pre-wall mounting



**Representation with
on-site shell construction kit**

Intended use

- For drywall construction
- For installation in partial or room-height pre-wall installations
- For installation in room-height installation walls
- For mounting washbasins
- For Dyson Airblade wash + dry WD06 wall fitting
- For floor structures 0-22 cm

Features

- Self-supporting Sendzimir galvanised and sound-insulated steel frame 48 mm
- Galvanised footrests, adjustable 0-22 cm
- Rotatable plastic feet, depth suitable for installation in UW 50 and UW 75 U-profiles
- Fastening distance washbasin up to 37.5 cm
- Connection elbow can be mounted in various depth positions without tools
- Soundproofed connection elbow mounting
- Mounting on metal crossbar with threaded rods

Scope of delivery

- 2 insulating sleeves
- Connection elbow made of PE-HD, DN 50 mm
- Seal DN 32 mm
- 2 threaded rods M10
- Fastening material

Make: Burda
Type: BS+
Item no.: 212201