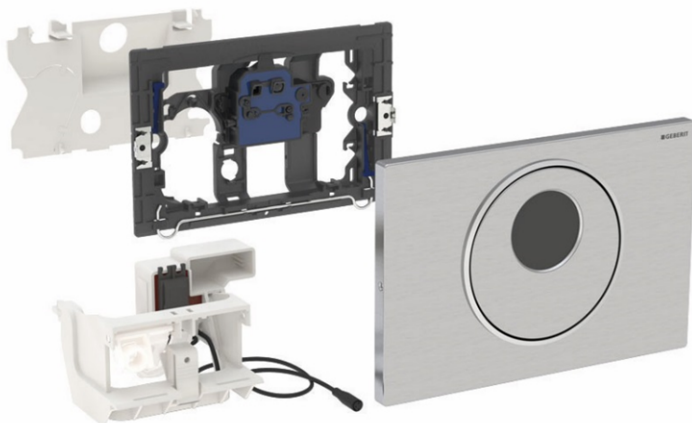


Geberit Toilet control with electronic flush activation, mains operation, dual flush, Sigma10 Round flush plate, automatic/touchless/manual, screw-on



Intended use

- For contactless flush activation of Geberit Sigma concealed cisterns 12 cm

Features

- Automatic flush activation
- Contactless activation of a 1-volume or 2-volume flush by approaching with your hand
- Stainless steel flush plate, screw-on
- External power supply
- Low-voltage operation, no mains voltage in the cistern
- With tamper-proof plug connection
- Reliable IR distance detection
- Pre-flush adjustable
- Functions can be set and queried using the Geberit service mobile phone
- Flush activation can be deactivated via the Geberit Clean mobile phone
- Self-calibrating electric lifting device

Scope of delivery

- Sigma10 Round actuator plate
- Mounting frame with infrared control, pre-assembled
- Protective plate
- Bearing block with servo motor and lifting device, pre-assembled
- Push rod
- Mounting materials

Make: Geberit
Type: Toilet control
Item no.: 505436