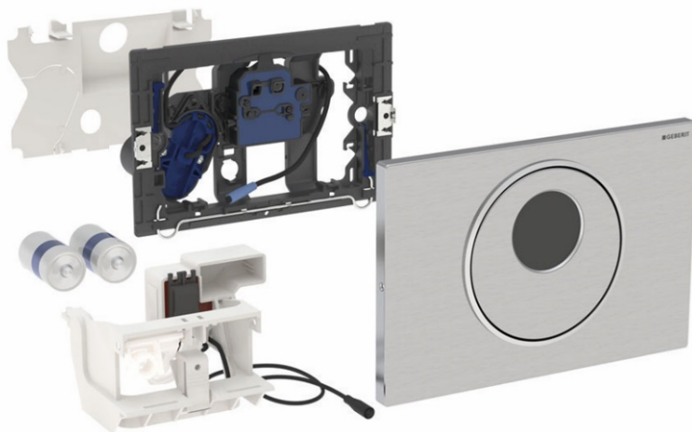


Geberit Toilet control with electronic flush activation, battery operated, dual flush, Sigma10 Round flush plate, fully automatic/touchless/manual, screw-on



Intended use

- For contactless flushing of Geberit Sigma concealed cisterns 12 cm

Features

- Automatic flush activation
- Contactless activation of a 1-volume or 2-volume flush by approaching with your hand
- Plastic flush plate
- Operates with low voltage, no mains voltage in the cistern
- With non-interchangeable plug connection
- Reliable IR distance detection
- Pre-flush adjustable
- Functions can be set and queried using the Geberit service mobile phone
- Flush activation can be deactivated using the Geberit Clean mobile phone
- Self-calibrating electric lifting device

Scope of delivery

- Sigma10 Round actuator plate
- Mounting frame with infrared control, pre-assembled
- Protective plate
- Bearing block with servo motor and lifting device, pre-assembled
- Push rod
- Mounting materials

Make: Geberit

Type: Toilet control

Item no.: 505433