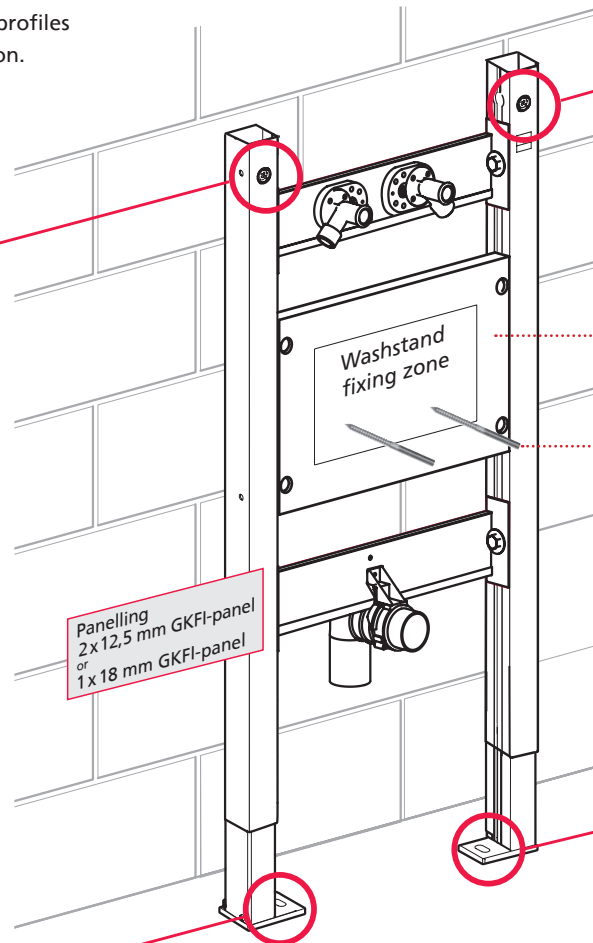
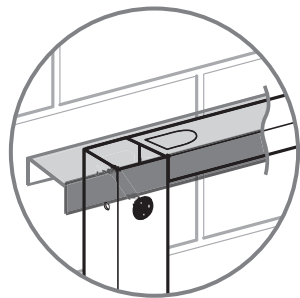


Installation instructions BS+ Washstand for wall fitting

Mounting on the pre-wall

To produce the planking support can be installed with UW drywall profiles profiles by simply plugging them on.

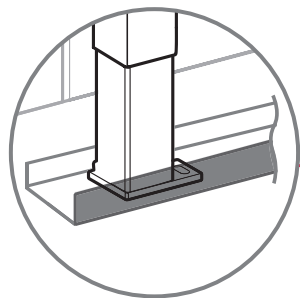


Push the threaded rod through the drill hole into the wall bracket until it clicks, align the depth of the wall bracket and secure with the clamp

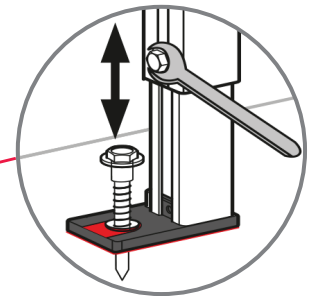
Waterproof glued multilayer board

Fastening the washstand fastening bolts with a 10 mm spanner

Feet max. 220 mm extendable



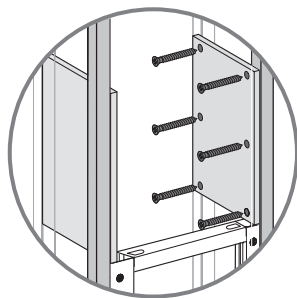
Use of a UW drywall profile as a floor rail facilitates the professional drywall panelling.



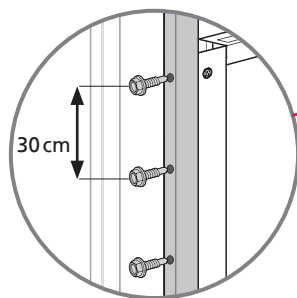
Note: Before fitting the element to the corresponding dimensions of the ceramic manufacturer before installation. Use a 13 mm spanner to fasten.

Installation instructions BS+ Washstand for wall fitting

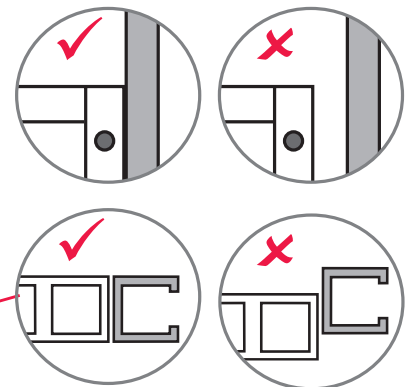
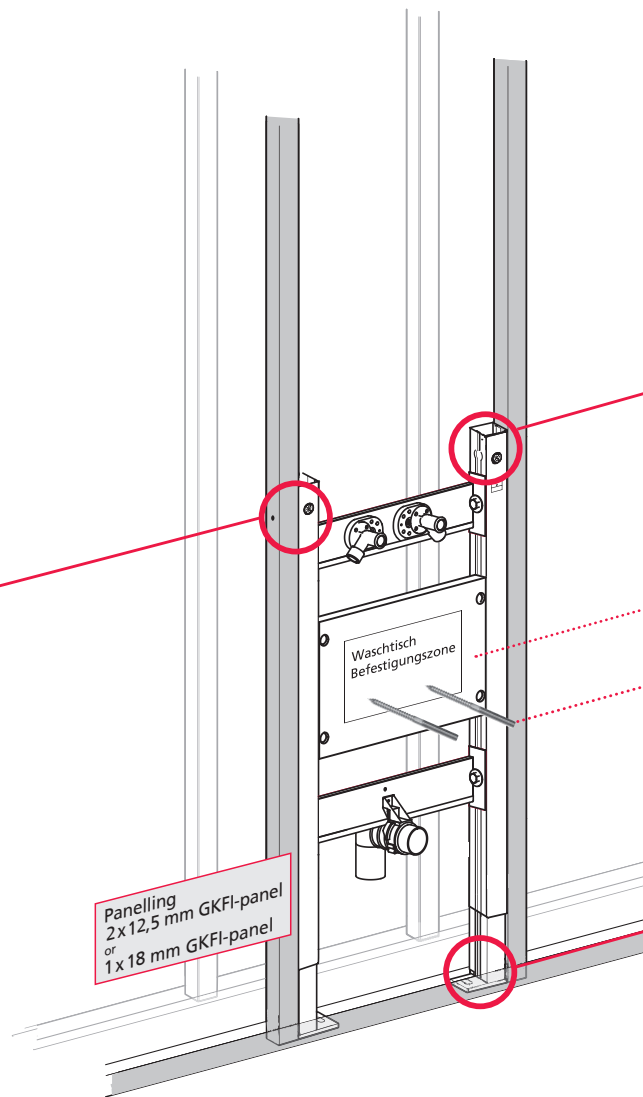
Mounting in the stud wall



Insert stabilising plates



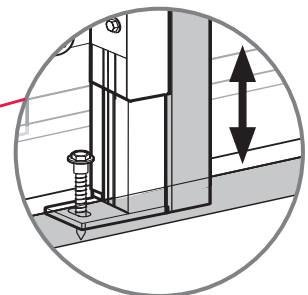
Screw the mounting element to the vertical drywall profiles.



Waterproof glued multilayer board

Fastening the washstand fastening bolts with a 10 mm spanner

Feet max. 220 mm extendable



Note: Before fitting the element to the corresponding dimensions of the ceramic manufacturer before installation. Use a 13 mm spanner to fasten