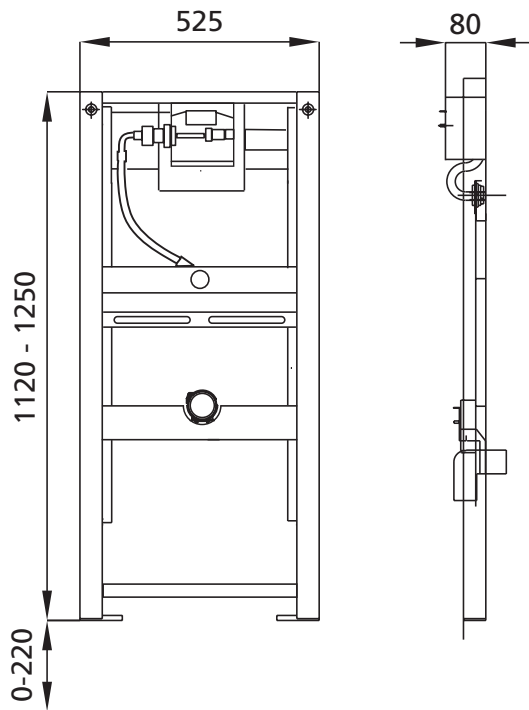
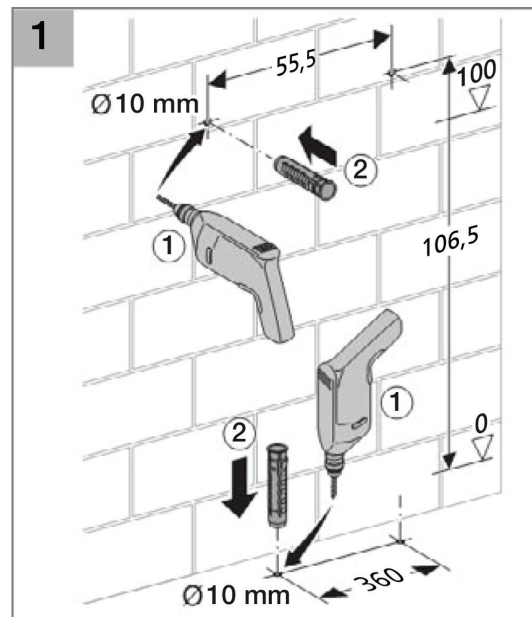


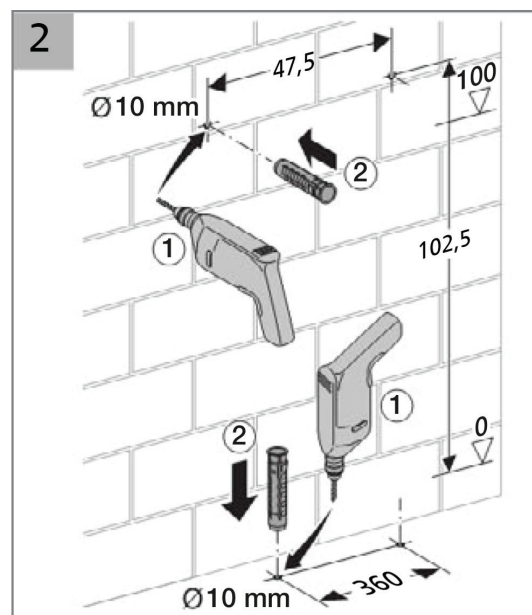
# BS+ Urinal Installation instructions and fitting list



Drill hole spacing when mounting the wall bracket to the outside



Drill hole spacing when mounting the wall bracket inwards



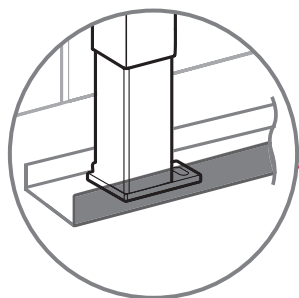
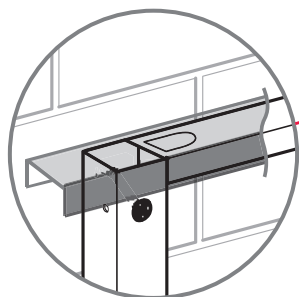
**Note:**

All traverses are freely adjustable.

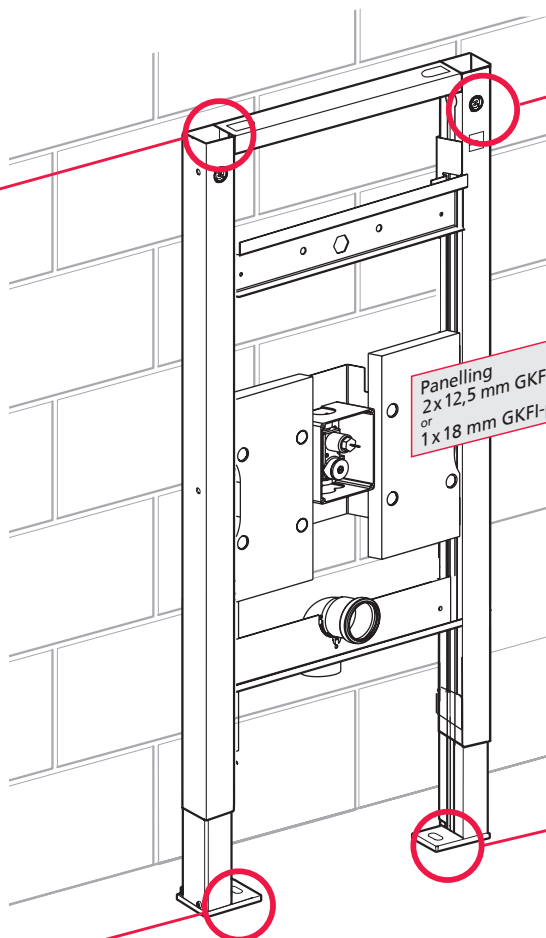
Please set the height, inlet, outlet and fastening as well as the width of the fastening on site in accordance with the manufacturer's instructions for the urinal used.

## Mounting on the front wall

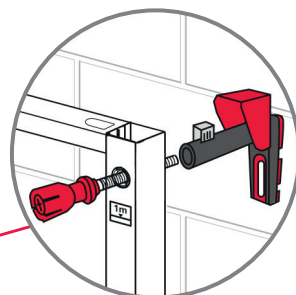
To produce the planking support can be installed with UW drywall profiles by simply plugging them on.



Use of a UW drywall profile as a floor rail facilitates the professional drywall panelling.

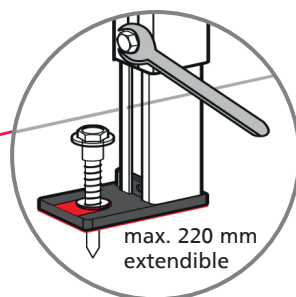


Panelling  
2x 12,5 mm GKFI-panel  
or  
1x 18 mm GKFI-panel

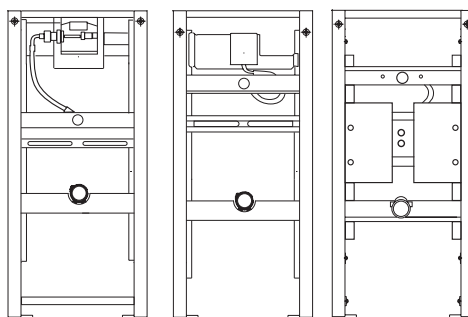


Push the threaded rod through the drill hole into the wall bracket until it clicks, align the depth of the wall bracket and secure with the clamp.

Use a 13 mm spanner to fasten

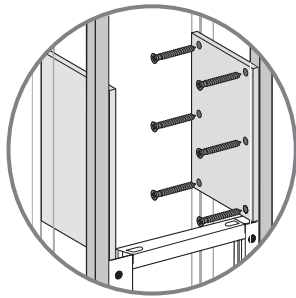


**Please note:** Adjust the element to the corresponding dimensions of the ceramic manufacturer before installation.

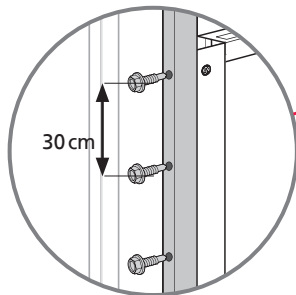


Applicable to all urinal types

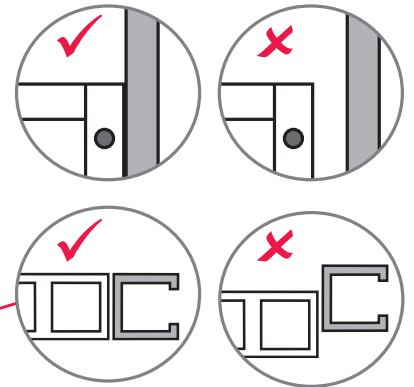
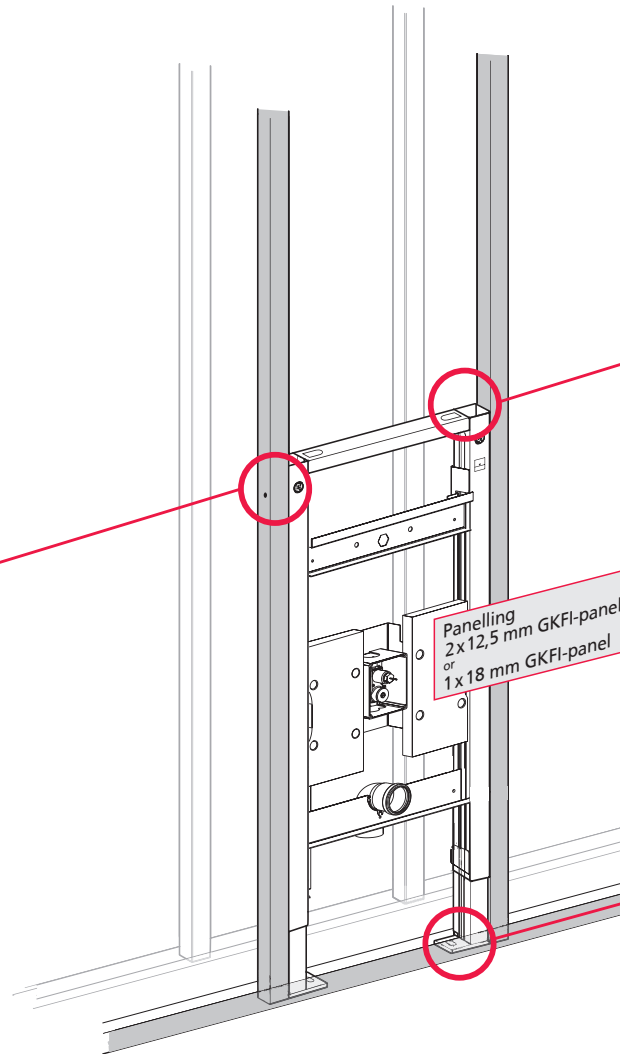
## Mounting on the stud wall



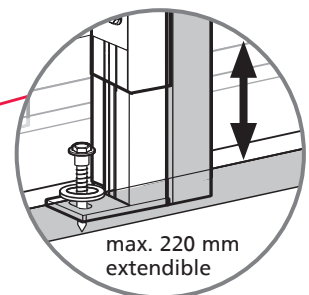
Insert stabilising plates



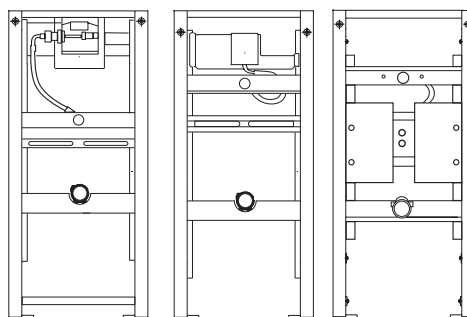
Screw mounting element to vertical drywall profiles.



Use a 13 mm spanner to fasten

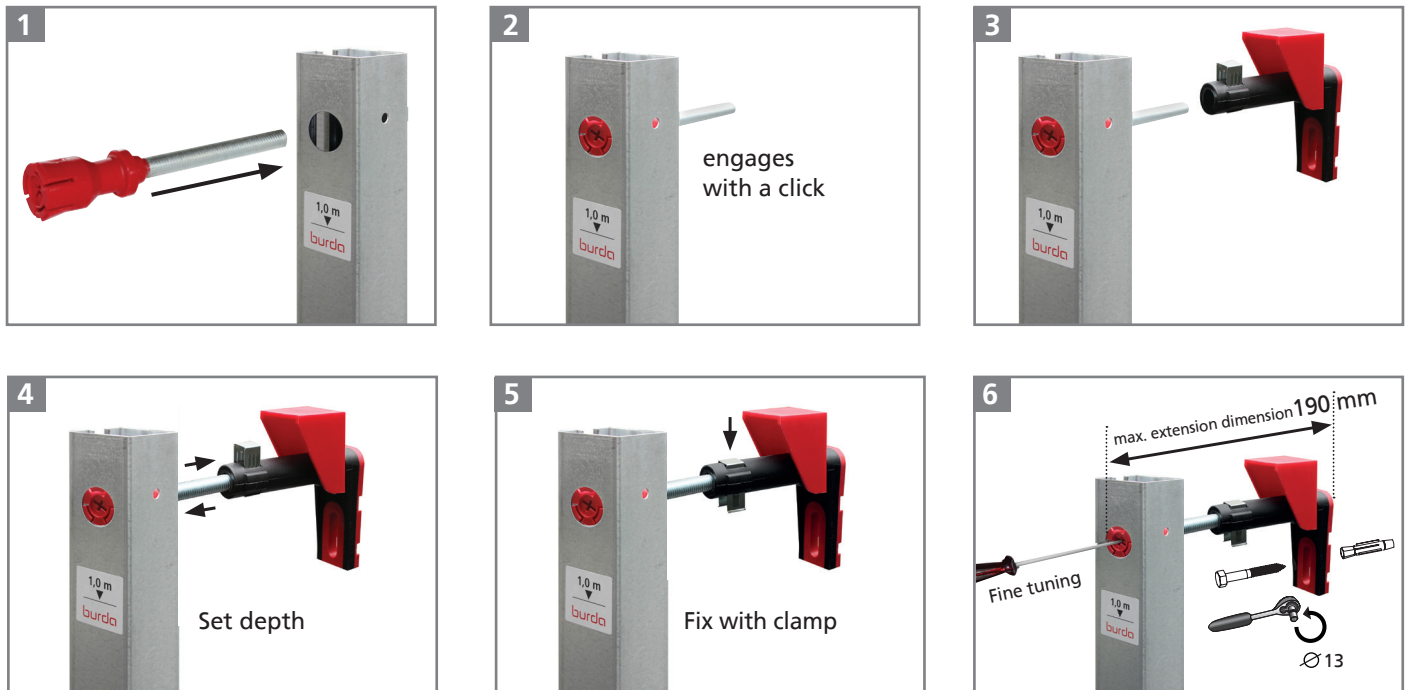


**Please note:** Adjust the element to the corresponding dimensions of the ceramic manufacturer before installation.



Applicable to all urinal types

## Mounting the new wall bracket on the BS+ element



- Push the threaded rod through the drill hole until it clicks
- Slide the wall mounting onto the threaded rod, align the depth and secure with the clamp
- Fasten the wall bracket to the wall with wall plugs - fine adjustment with a screwdriver

**The crossbars must be pre-adjusted to the respective ceramic during unfinished installation, see enclosed fitting list**

## Height adjustment of the crossbars and assembly of the bolts



All crossbars must be loosened from the front using a Phillips screwdriver, adjusted to the desired size of the ceramic and then fixed again.



Insert the M8 threaded bolt from behind through the crossbar with the slotted hole, align to the required dimension and lock with the washer and nut provided.

